

Firmware Upgrade

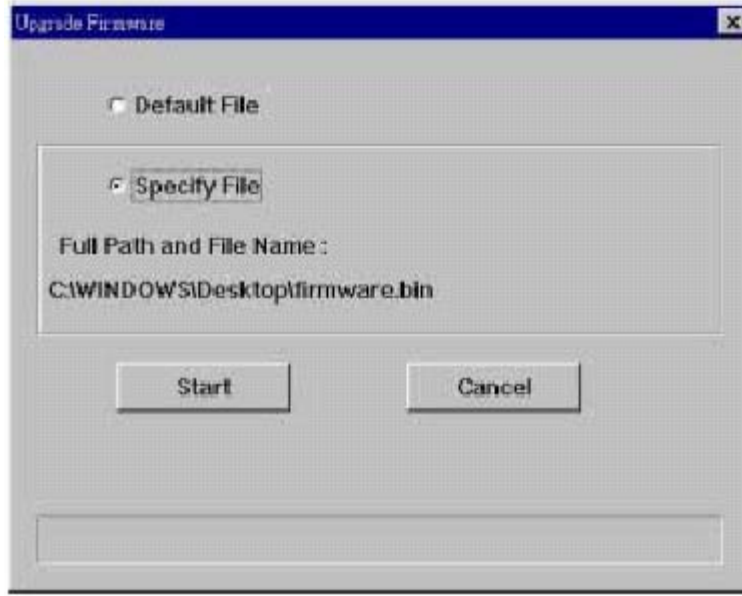
You may manually upgrade your firmware using a web browser (see below) or by using IP Share by performing the following steps:

IP Share Software

1. Connect the device to a computer that can configure the device using the GUI (IP SHARE setup). Copy the latest firmware to the directory where the router **setup.exe** is located or to any desired location on the hard drive (e.g. C:\IPS).
2. Go back to the **management utility** window, click on “File” from the Tool Bar, select “Find Device” from the drop down menu. You will see a list of the IP Sharing Devices on the screen. Select the one that you are going to update the firmware and click on the Tool Bar. The Upgrade Firmware window will appear.



3. The program will upgrade the router with the latest version of firmware, (i.e. **firmware.bin**). In the **Upgrade Firmware** window, select “**Specify File**”, enter the firmware file’s path (e.g. C:\WINDOWS\Desktop\firmware.bin), and then click “**Start**” to upgrade the firmware. Contact OnQ Technical Support (tech.support@onqtech.com) for most recent version of firmware.
- Upgrade Firmware Window



4. The upgrade will take a couple of minutes to complete, ***do not interrupt the process***. After the upgrade process completes, you will see a “**Finish**” button, click on it to finish the procedure.

Web Browser

1. Ask your local distributor for the latest firmware version. Download and store the updated program in the server's hard disk.
2. Click **OTHERS** and then on **Firmware Upgrade** to enter the **Firmware Upgrade** window and enter the file name you already saved (it is recommended that you enter the **drive:\path** before the file name). Or simply click the **Browse** button to direct to the proper location. See screen capture below.
3. Click “**RESET**” to clear all the settings or click **Upgrade Now** to start upgrade.

